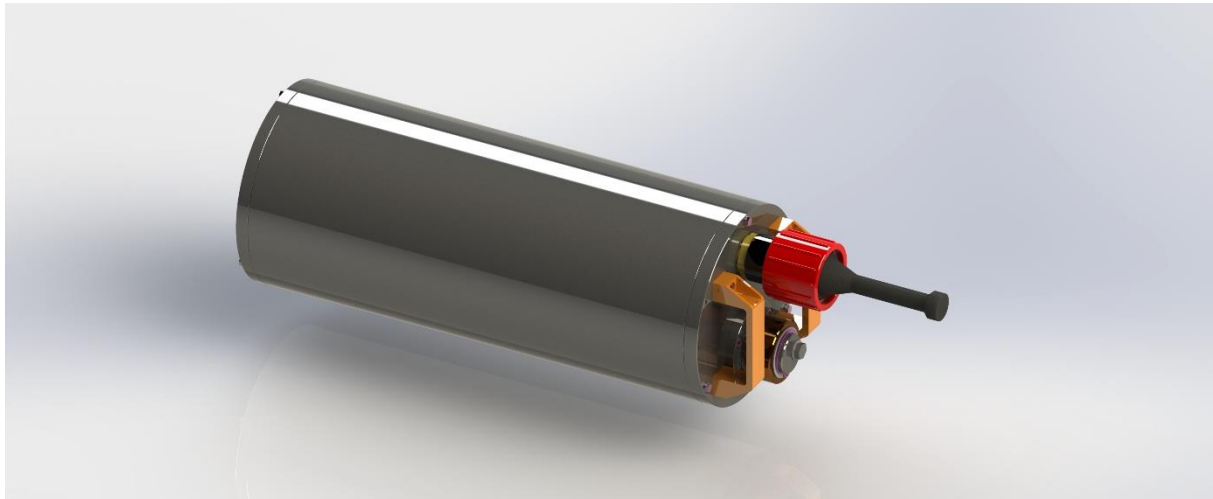


Datasheet: Oktopus lithium deepsea battery

Variant M-3000D24



1 Mechanics

Maximum pressure (bar)		300
Housing material		Stainless steel
Dimensions (mm)	Without connectors	Ø175 x 434
	With connectors	Ø175 x 622
Weight (kg)	In air	37
	In water	27
Connectors	Power output	SubConn HPBH4F
	Charge input	Oktopus service port

2 Electrics

Nominal voltage (V)		26.4 (24)
Configuration		8S8P
Chemistry		LiFePO4 (Li-Ion)
Nominal capacity (mAh)		20,000
Nominal capacity (Wh)		528
Discharge current, continuously (A)		60
Charge current (A)		5

3 Features

BMS		Integrated
Balancer		Integrated
Sicherheitsvorrichtungen	Serviceport	The battery can only be charged via the service port. When opening the service port, safe venting is ensured, which also remains in place during the charging process. The battery therefore does not have to be disassembled for charging.



Oktopus GmbH
 Kieler Straße 51
 24549 Hohenwestedt, Germany
 t +49 4871 490316
 f +49 4871 490315
 info@oktopus-mari-tech.de

Oktopus GmbH Technik
 Wischhofstr. 1-3, Gebäude 13
 24148 Kiel, Germany
 t +49 431 7209350
 f +49 431 7209356
 www.oktopus-kiel.de

	Overcurrent protection	Yes
	Undervoltage protection	Yes
	Overvoltage protection	Yes
	Overtemperature protection	Yes

4 Operating conditions

Working temperature $t_{Operation}$ (°C)		$0 \leq t_{Operation} \leq 30$
Storage temperature $t_{Storage}$ (°C)		$-5 \leq t_{Storage} \leq 60$

Detailed information on handling the battery can be found in the separate documentation.